



---

Solutions for  
**Heavy Industry**



SECTOR

## **PRODUCT RELIABILITY IS ACHIEVED THROUGH A PRODUCTION PROCESS GEARED TOWARDS EXCELLENCE**

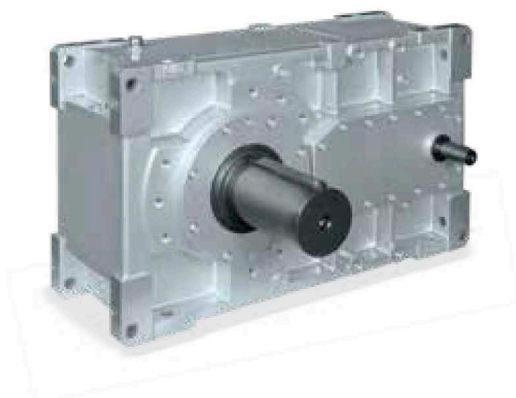
All essential parts are produced in Bonfiglioli's own plant using constantly updated machine tools of the latest generation.

Machining technology is therefore fully owned by Bonfiglioli and part of a know-how acquired over 50 years of manufacturing.

Today, precision machining is very much a part of Bonfiglioli's consolidated heritage.

The CNC machine tools and equipment used for the production of gears and other essential component parts are all state-of-the-art in terms of quality, efficiency and productivity in general.

Advanced machinery has always been central to Bonfiglioli's production system and Bonfiglioli has always assigned top priority to the quality and efficiency of its machine park, and has invested accordingly.



## HDP PARALLEL SHAFT GEARBOX

Consistently high torque ratings, gear ratios in close progression, numerous mounting options along with compact dimensions will ease the engineering of any application.

The housing from nodular cast iron ensures robustness even in the harshest environment and the class of precision the gear are machined into helps produce an extremely quiet and vibration-free operation.

| Type    | Torque [Nm] |
|---------|-------------|
| HDP 60  | 5 190       |
| HDP 70  | 7 080       |
| HDP 80  | 12 600      |
| HDP 90  | 17 900      |
| HDP 100 | 28 210      |
| HDP 110 | 31 790      |
| HDP 120 | 41 250      |
| HDP 125 | 49 240      |
| HDP 130 | 69 570      |
| HDP 140 | 87 060      |
| HDP 150 | 117 200     |
| HDP 160 | 147 070     |
| HDP 170 | 190 190     |
| HDP 180 | 209 900     |

### Torque range

5 190 ... 209 900 Nm

### Gear ratios

7.1 ... 500

### Mounting

Foot, flange, shaft mounting



ATEX GEARBOX AVAILABLE