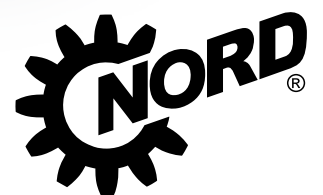


# DuoDrive with energy efficiency IE5+

Two become one



**DRIVESYSTEMS**

Our Solution. Your Success.

# DuoDrive – integrated geared motor concept

## The revolutionary DuoDrive with integrated IE5+ motor is especially suitable for reducing the total cost of ownership.

- ▶ Extremely high system efficiency of up to 92 %
- ▶ Reduced TCO and fast ROI
- ▶ Reduced number of versions through constant motor torque over a wide speed range
- ▶ Very compact Wash-down design for optimal installation space utilisation
- ▶ Market-compatible connection dimensions for simple replacement
- ▶ Very low noise emissions thanks to quiet running

## Features

- ▶ Latest generation permanent magnet synchronous motor (PMSM) integrated in a single-stage helical in-line gear unit housing
- ▶ Power range from 0.35 to 3 kW in a single size
- ▶ Flexible attachment options:
  - ▶ B5 flange (diameter 160 mm)
  - ▶ B14 flange (diameter 160 or 200 mm)
  - ▶ Torque arm, shrink disc and GRIPMAXX™
- ▶ Wide variety of motor connection options such as HANQ8/HAN10E plug connectors, circular connectors or directly wired
- ▶ Various motor options such as holding brake or integrated encoder system

## Variant reduction

By way of a targeted reduction of variants, it is possible to minimise administrative expenses and to set up leaner manufacturing, logistics, storage and service processes. The new generation of IE5+ motors combines the benefits of the modular system with the possibilities of reducing variants. The solution will be tailored to each customer and features the following advantages:

- ▶ Motor can be operated worldwide
- ▶ Utilisation of the high system overload capacity
- ▶ Large adjustment range
- ▶ Explicitly tailored to the individual load range
- ▶ Minimal space requirements paired with high power density

## Perfect system solution combined with NORD drive electronics

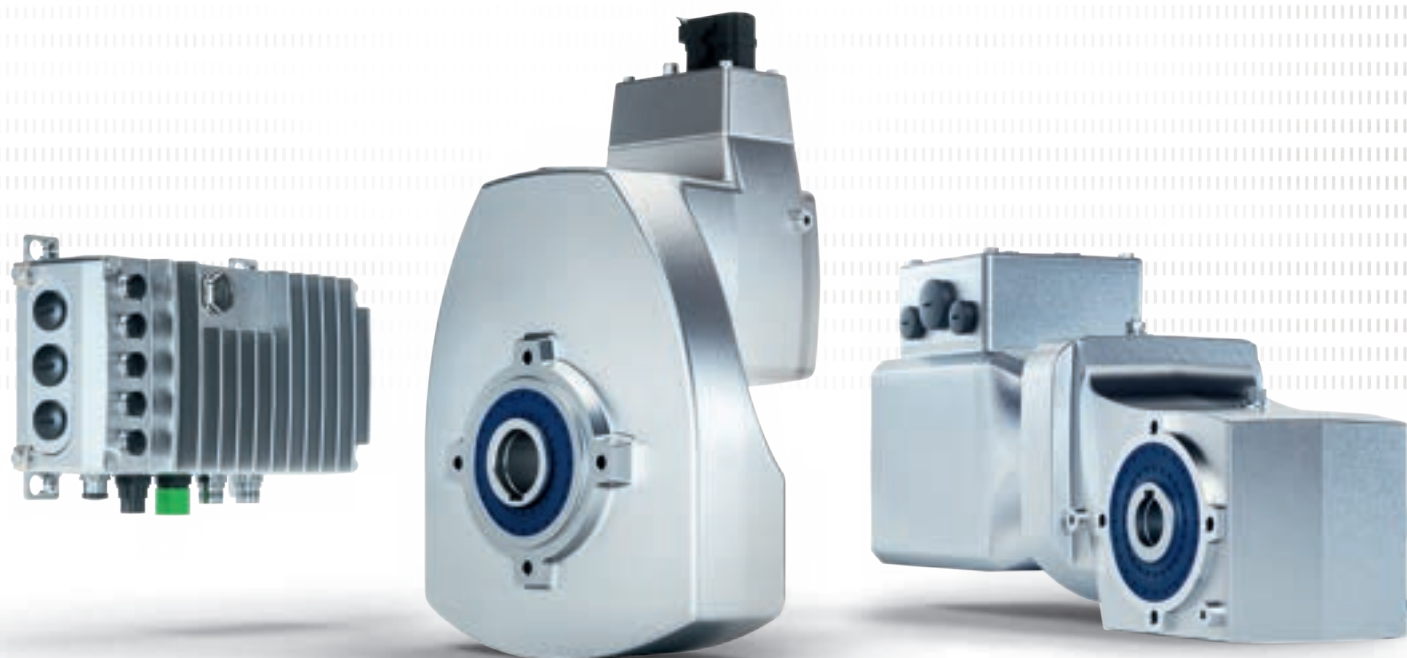
- ▶ NORDAC *PRO* for control cabinet installations
- ▶ NODAC *LINK*, *FLEX* and *ON+* for decentralised wall mounting
- ▶ Suitable system wiring:
  - ▶ Motor connection
  - ▶ Mains supply
  - ▶ Signal connection

- ▶ Together with perfectly matched drive electronics, NORD DuoDrive is the perfect solution for high power requirements and outstanding system efficiency



# ALL-ROUNDERS FOR ALL-AROUND COMPATIBILITY.

Innovative, compatible, future-proof:  
DuoDrive, IE5+ and NORDAC *ON*.



For more information:



S9012 –  
IE5+ motor



TI 60-0001

## NORD DRIVESYSTEMS Group

- ▶ Family business from Bargteheide near Hamburg with 4,900 employees
- ▶ Drive solutions for more than 100 branches of industry
- ▶ 7 production locations worldwide
- ▶ Present in 98 countries on 5 continents
- ▶ More information: [www.nord.com](http://www.nord.com)

Headquarters:  
Getriebebau NORD GmbH & Co. KG  
Getriebebau-Nord-Str. 1  
22941 Bargteheide, Germany  
T: +49 45 32 / 289 0  
F: +49 45 32 / 289 22 53  
[info@nord.com](mailto:info@nord.com)